



HOME SIZE: 129.9M<sup>2</sup>

LAND SIZE: 300M<sup>2</sup>

4 1 2 1

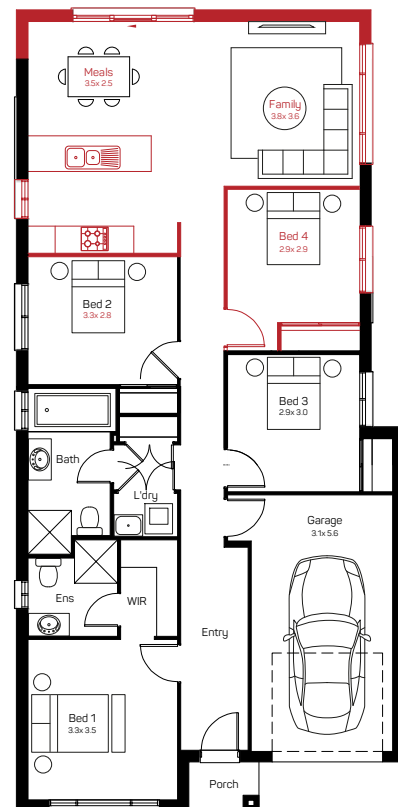
# \$1,105,130\*

## GENEVA 14 GRACE FACADE

Lot 4479 Proposed Road, Box Hill, The Hills of Carmel Estate

### HOUSE AND LAND PACKAGE INCLUSIONS

- Lifetime Structural Guarantee
- Hybrid steel frame
- Floor coverings
- 20mm stone kitchen benchtop
- Flyscreens to opening windows
- Induction cooktop
- Fully ducted Air Conditioning
- Soft close drawers and doors to kitchen and bathroom
- 6.6kW Solar Package
- And much, much more...



Michael Depalo 0413 411 935 | [mdepalo@domainehomes.com.au](mailto:mdepalo@domainehomes.com.au) | 13 64 69

\*Facade image may depict features not included in the package prices shown such as render, tiling, lighting, roof covering, timber decking and landscaping. Plans are subject to approval by the Principal Developer and Local Authorities. Domaine Homes NSW reserves the right to withdraw or alter this package at any time without notice. Allowance for site costs included, pricing is subject to change without notice. Domaine Homes NSW is not the owner of the land and is not responsible for final site dimensions or registration times. All information given at this time is believed to be correct.