

RAWSON HOMES

HOUSE PACKAGES



**RAWSON
HOMES**



Seaview 24 GF DG Classic Facade Illustrated



Seaview 24 GF DG Majestic Facade Illustrated



Seaview 24 GF DG Trend Facade Illustrated

+ Land = Your New Home at Georges Fair



HOUSE & LAND PACKAGE PRICE

\$282,900

PACKAGE INCLUSIONS

Suits 12.5m Lot

- SEAVIEW 24 GF DG, Classic Facade, Moroka feature to front facade.
- FIXED PRICE tender, piercing to slab, site costs. H class slab, BASIX & design guidelines.
- LIVING SENSATIONS INCLUDED with life's luxuries; Alfresco, Daikin Air Conditioning, Hyne T2 Blue frame & Caesarstone bench tops to kitchen.
- Luxe + Gold Inclusions: Choice of 3 designer kitchens, Baumatic 900mm European stainless steel appliances, choice of tiled or Colorbond roof, designer bathroom inclusions, sectional overhead garage doors with remote of your choice, Taubmans 3 coat paint system, Semi frameless shower screens, plus much more.
- Quality ceramic floor tiling to entry, kitchen & wet areas with carpet to all other areas.
- Flyscreens to all opening windows & sliding doors.
- Coloured concrete driveway & front path.
- Alarm (NX series alarm with 3 sensors)
- 5 Star gas hot water system.
- 50 year termite barrier warranty.
- Brick pier letterbox

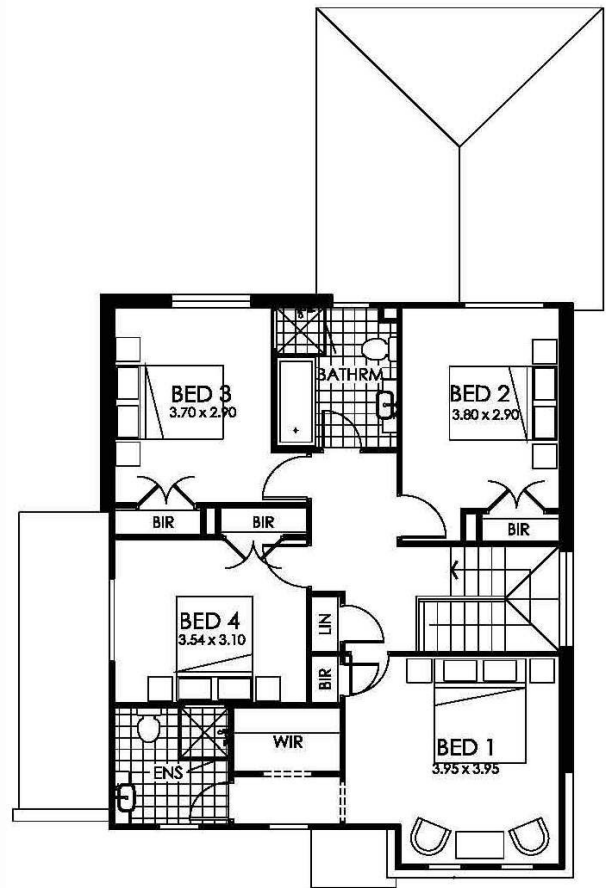
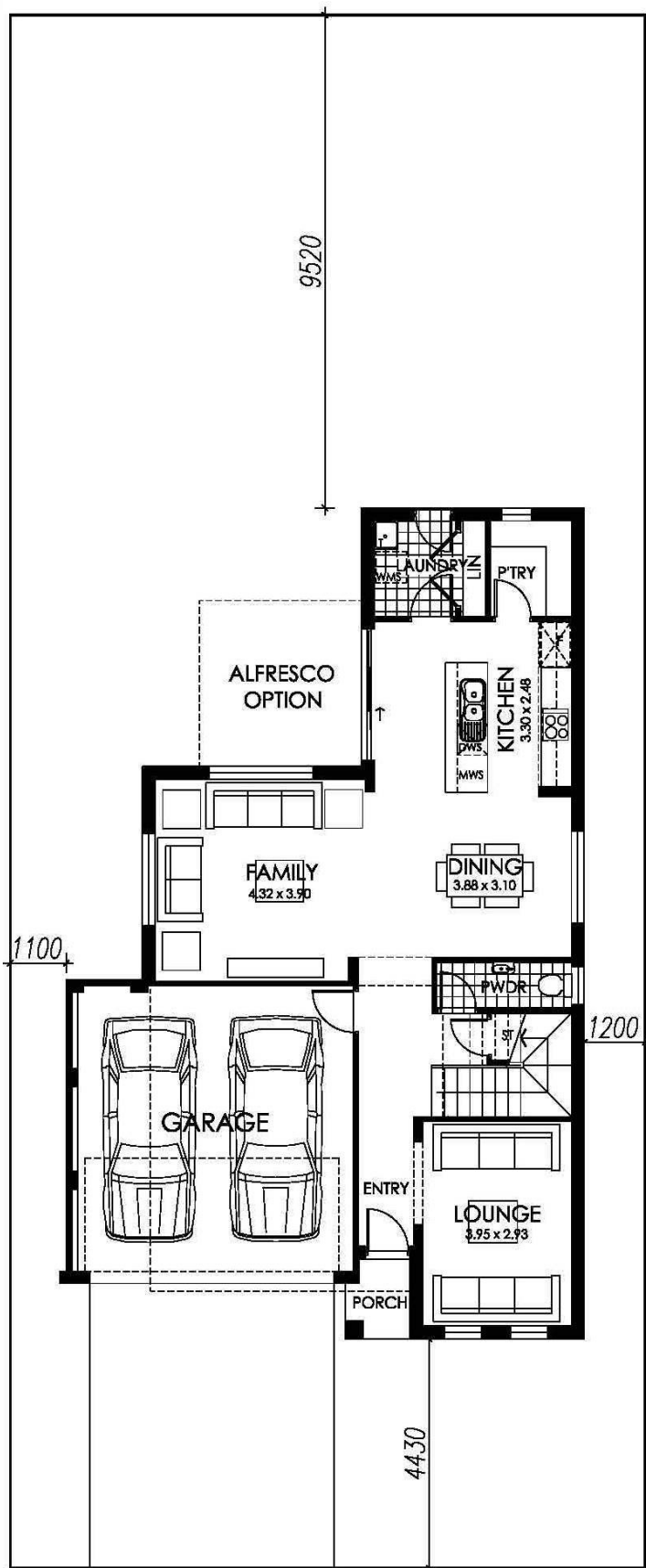
Sales and Information

1300 223 345 www.rawsonhomes.net.au

Contact: Martin Hopwood - 0404 577 913



**RAWSON
HOMES**



12.5m

30m

Sales and Information

1300 223 345 rawsonhomes.net.au

Disclaimer: Fixed for all lots with up to 1m of fall across the site. Fixed Price Packages are subject to availability, developer's design review panel, bushfire requirements & statutory approval. Whilst every effort is made to provide accurate information images are for illustrative purposes and intended to provide a visual guide only. Refer to individual contracts for final details. Details are correct at time of printing and subject to change without notice or obligation. Printed October 2012.

