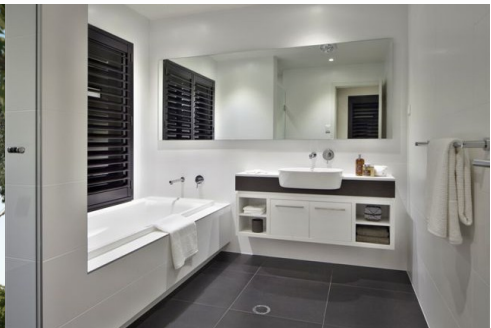


RAWSON HOMES
**HOUSE
 PACKAGES**



+ Land = Your New Home at Georges Fair



HOUSE PACKAGE PRICE

\$231,900

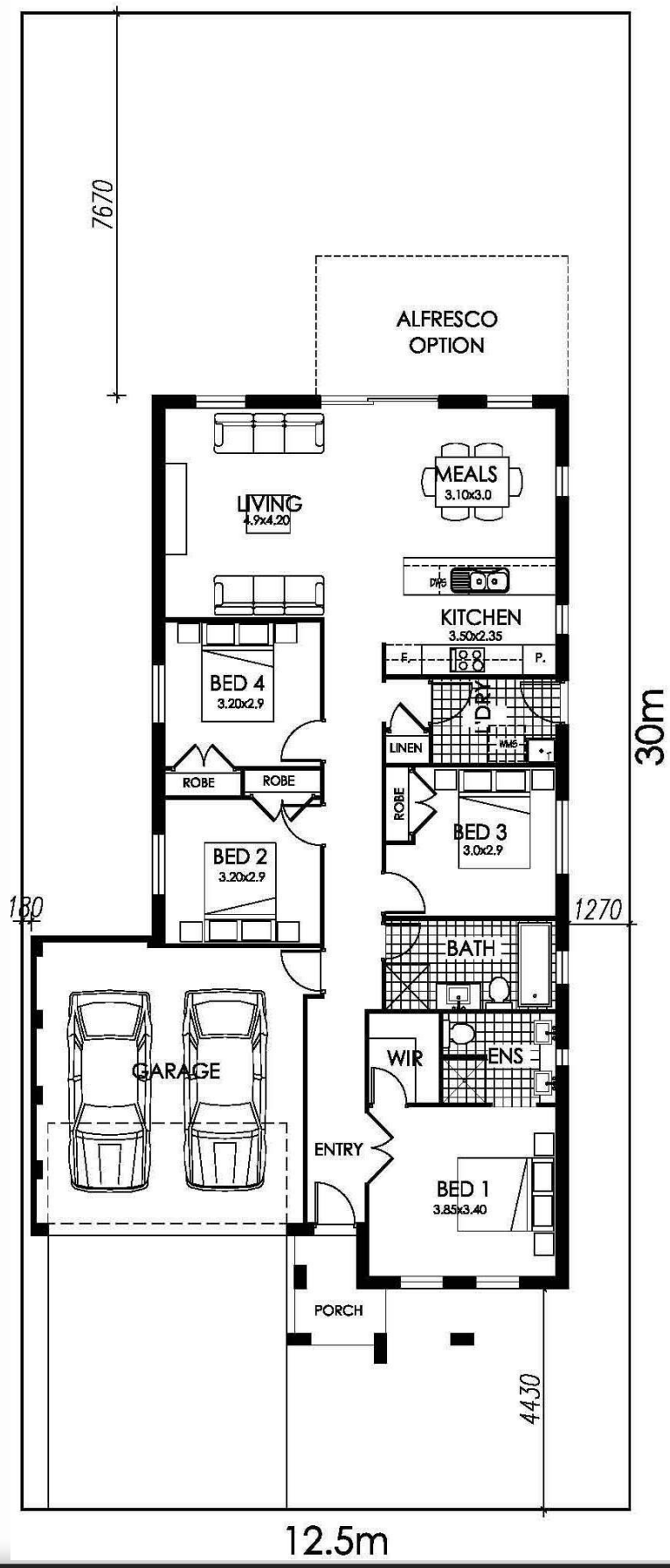
Suits 12.5m Lot

PACKAGE INCLUSIONS

- LINLEY II DG, Vogue facade with Moroka feature to the front.
- FIXED PRICE tender, piercing to slab, site costs, BASIX & design guidelines.
- H class slab upgrade in lieu of M class slab
- LIVING SENSATIONS INCLUDED with life's luxuries; Alfresco, Daikin Air Conditioning, Hyne T2 Blue frame & Caesarstone bench tops to kitchen.
- LUXE+ GOLD INCLUSIONS Choice of 3 designer kitchens, Baumatic 900mm European stainless steel appliances, choice of tiled or Colorbond roof, designer bathroom inclusions, sectional overhead garage doors with remote of your choice, Taubmans 3 coat paint system, Semi frameless shower screens, flat profile roof tiles, gas connection (including hot water system, appliances & bayonet) plus much more.
- Quality ceramic floor tiling to entry, kitchen & wet areas with carpet to all other areas.
- Flyscreens to all opening windows & sliding doors.
- Coloured concrete driveway & front path.
- Alarm (NX series alarm with 3 sensors)
- 5 Star gas hot water system.
- Brick pier letterbox.

Sales and Information
 1300 223 345 www.rawsonhomes.net.au
 Contact: Martin Hopwood - 0404 577 913





Sales and Information
 1300 223 345 rawsonhomes.net.au

Disclaimer: Fixed for all lots with up to 1m of fall across the site. Fixed Price Packages are subject to availability, developer's design review panel, bushfire requirements & statutory approval. Whilst every effort is made to provide accurate information images are for illustrative purposes and intended to provide a visual guide only. Refer to individual contracts for final details. Details are correct at time of printing and subject to change without notice or obligation. Printed October 2012.

