

# READY BUILT

by Edgewater Homes

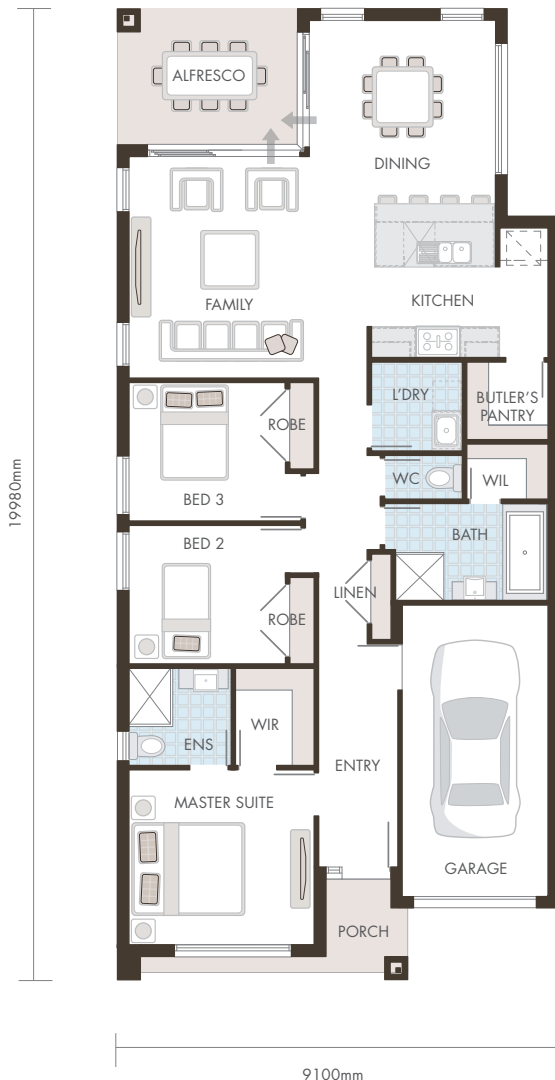
**FIXED PRICE  
NO MORE TO PAY**  
**\$460,000\***



**NUVO**



**LOT 45  
WATERSIDE**



**5% DEPOSIT**

**NO FURTHER PAYMENTS  
UNTIL YOU MOVE IN**

## EVERYTHING INCLUDED

- ✓ Fixed price site costs (no more to pay, no hidden extras)
- ✓ Contemporary front and rear landscaping
- ✓ Fencing
- ✓ Driveway & path
- ✓ Quality carpet throughout
- ✓ Tile flooring
- ✓ High 2590mm ceilings
- ✓ Resort style undercover alfresco
- ✓ Feature timber stacker sliding doors
- ✓ Designer kitchen with CaesarStone grand island kitchen bench and walk-in Butler's pantry
- ✓ 20mm CaesarStone benchtops to bathroom & ensuite
- ✓ Large 900mm European style Stainless steel appliances
- ✓ Dishwasher & microwave
- ✓ Remote control garage door

\*All photos, illustrations and plans are for illustrative purposes and should be used as a guide only. Pricing excludes telephone and consumer account opening fees. Package prices are subject to availability and are accurate at time of printing. Prices are subject to change without notice.