



# Home & Land Package

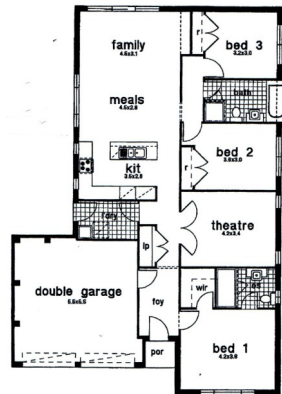
MIDDLETON RISE  
LAND SALE - MIDDLETON GRANGE - SYDNEY

**Upgrade to Vogue  
Façade, Render &  
Paint \$474,490**

## Iris 19 Traditional Facade

**Choice of 2  
floor plans.**

# \$465,840



# LILY HOMES

**Take advantage  
of this superb  
turn key offer.**

**The Iris 19 is an  
excellent low cost  
starter or  
investment.**

**Choose between  
the 3 bedrooms &  
theatre or 4  
bedroom designs.**

**Both designs with  
ensuite of course.**

### PRICE INCLUDES:

**Lot 51 / House & Single Garage / Standard Site  
Costs / Basix & Lily Quality Inclusions**

**Plus:** Carpet to bedrooms and / or home theatre.  
Ceramic tiling to porch, entry, hall, kitchen, meals, family.  
Vertical blinds. Flyscreens to opening windows.  
Stencilcrete driveway (up to 54m<sup>2</sup>). Clothes line.  
Turfing. Letterbox. H Class Slab.

*NB Double garage floor plan shown for illustration only.*

**Upgrade** Traditional Façade with ducted air conditioning,  
polyurethane kitchen doors and stone bench top **TOTAL \$483,220**

*Subject to survey, site assessment, estate requirements, council requirements, design guidelines etc.*

*comfort,  
design,  
affordability*

**Need something different?**  
**At Lily we build your plans, our plans or we'll design together. For  
more information simply call Ken on 02 4648 1745 or 0401 468 246**

