

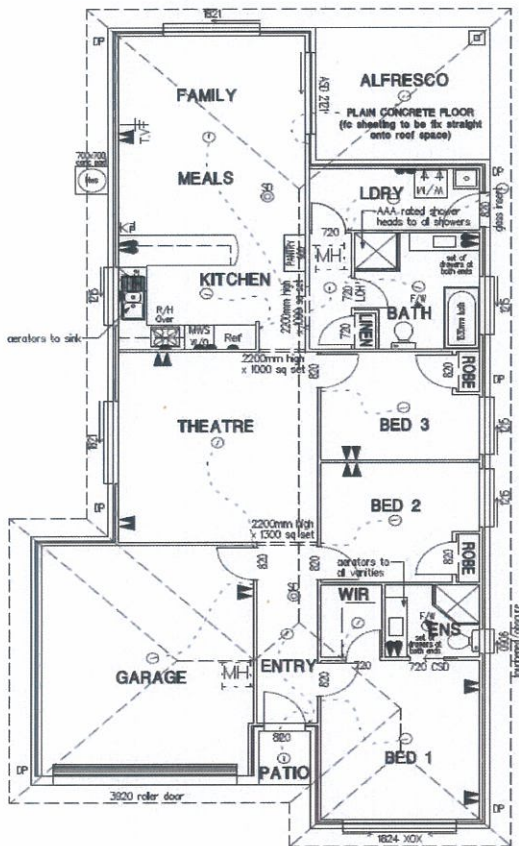
**LOTS 212, 213, 214, 215, 216, 217,  
235, 236, 237, 239, 240**  
**SIENNA GARDENS**  
**CLAREMONT MEADOWS**



550sqm  
sqm  
APPROX.

**FROM**  
**\$436,345**

## WATTLEBIRD



### House component includes the following:

- 3 BEDROOMS INCLUDING ENSUITE, THEATRE, MEALS, FAMILY AND ALFRESCO
- INCLUDES SITE WORKS, BASIX & WORKCOVER REQUIREMENTS
- CARPET THROUGHOUT WITH VINYL FLOOR COVERING TO KITCHEN AREA—WITHIN EAGLE HOMES STD 'A' RANGE.
- VERTICAL BLINDS THROUGHOUT WITHIN EAGLE HOMES STD RANGE TO ALL WINDOWS (EXCLUDING WET AREAS).

**Plus eagle homes standard range of quality inclusions**  
Including double power points, 1 x tv point & 1 x phone point (prewire only)  
Microwave provision and dishwasher provision plus many extras

\* House and land sold as separate components and is subject to land registration. Pricing is subject to a detailed site inspection and council and statutory requirements not previously allowed for. Price is subject to change without notice. Price is based on nominated home on nominated lot. All drawings & images are for illustrative purposes only. Facade illustrated may not be facade included in advertised House & Land package. Eagle Homes reserves the right to revise the plans and specifications without notice or obligation. E&OE. Please note that the above price excludes fences. August 2011

**Phone for more information : 9822 5468**

[www.eaglehomes.com.au](http://www.eaglehomes.com.au)

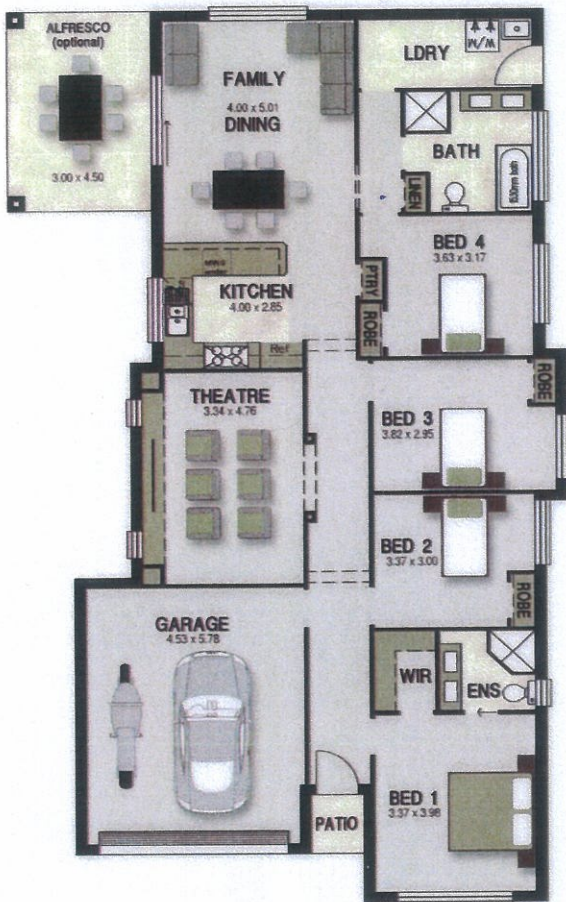
**LOTS 212, 213, 214, 215, 216, 217,  
235, 236, 237, 239, 240  
SIENNA GARDENS  
CLAREMONT MEADOWS**



**WATTLEBIRD**

550sqm  
sqm  
APPROX.

**FROM  
\$444,154**



**House component includes the following:**

- 4 BEDROOMS INCLUDING ENSUITE, THEATRE ROOM, FAMILY & MEALS, SINGLE GARAGE & ALFRESCO
- INCLUDES SITE WORKS, BASIX & WORKCOVER REQUIREMENTS
- CARPET THROUGHOUT WITH VINYL FLOOR COVERING TO KITCHEN AREA—WITHIN EAGLE HOMES STD 'A' RANGE.
- VERTICAL BLINDS THROUGHOUT WITHIN EAGLE HOMES STD RANGE TO ALL WINDOWS (EXCLUDING WET AREAS).

**Plus eagle homes standard range of quality inclusions**

**Including double power points, 1 x tv.point & 1 x phone point (prewire only)**

**Microwave provision and dishwasher provision plus many extras**

\* House and land sold as separate components and is subject to land registration. Pricing is subject to a detailed site inspection and council and statutory requirements not previously allowed for. Price is subject to change without notice. Price is based on nominated home on nominated lot. All drawings & images are for illustrative purposes only. Facade illustrated may not be facade included in advertised House & Land package. Eagle Homes reserves the right to revise the plans and specifications without notice or obligation. E&OE. Please note that the above price excludes fences. August 2011

**Phone for more information : 9822 5468**

[www.eaglehomes.com.au](http://www.eaglehomes.com.au)

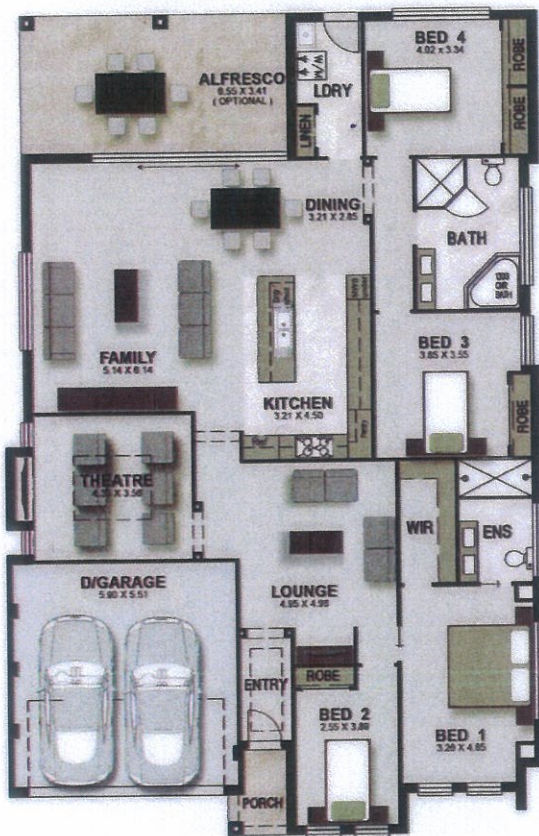
**LOTS 212, 213, 214, 215, 216, 217,  
235, 236, 237, 239, 240  
SIENNA GARDENS  
CLAREMONT MEADOWS**



550sqm  
sqm  
APPROX.

**FROM  
\$456,150**

**GOLDEN EAGLE S2**



**House component includes the following:**

- 4 BEDROOMS INCLUDING ENSUITE, THEATRE, LOUNGE, FAMILY AND ALFRESCO
- INCLUDES SITE WORKS, BASIX & WORKCOVER REQUIREMENTS
- CARPET THROUGHOUT WITH VINYL FLOOR COVERING TO KITCHEN AREA—WITHIN EAGLE HOMES STD 'A' RANGE.
- VERTICAL BLINDS THROUGHOUT WITHIN EAGLE HOMES STD RANGE TO ALL WINDOWS (EXCLUDING WET AREAS).

**Plus eagle homes standard range of quality inclusions**

**Including double power points, 1 x tv point & 1 x phone point (prewire only)**

**Microwave provision and dishwasher provision plus many extras**

\* House and land sold as separate components and is subject to land registration. Pricing is subject to a detailed site inspection and council and statutory requirements not previously allowed for. Price is subject to change without notice. Price is based on nominated home on nominated lot. All drawings & images are for illustrative purposes only. Facade illustrated may not be facade included in advertised House & Land package. Eagle Homes reserves the right to revise the plans and specifications without notice or obligation. E&OE. Please note that the above price excludes fences. August 2011

**Phone for more information : 9822 5468**

[www.eaglehomes.com.au](http://www.eaglehomes.com.au)



**HUMMINGBIRD S8**

550sqm  
sqm  
APPROX.

**FROM**  
**\$500,520**



**House component includes the following:**

- 4 BEDROOMS INCLUDING ENSUITE, LIVING, RUMPUS, SITTING ROOM, SUNROOM, PARENTS RETREAT AND DOUBLE GARAGE
- INCLUDES SITE WORKS, BASIX & WORKCOVER REQUIREMENTS
- CARPET THROUGHOUT WITH VINYL FLOOR COVERING TO KITCHEN AREA—WITHIN EAGLE HOMES STD 'A' RANGE.
- VERTICAL BLINDS THROUGHOUT WITHIN EAGLE HOMES STD RANGE TO ALL WINDOWS (EXCLUDING WET AREAS).

**Plus eagle homes standard range of quality inclusions**  
**Including double power points, 1 x tv point & 1 x phone point (prewire only)**  
**Microwave provision and dishwasher provision plus many extras**

\* House and land sold as separate components and is subject to land registration. Pricing is subject to a detailed site inspection and council and statutory requirements not previously allowed for. Price is subject to change without notice. Price is based on nominated home on nominated lot. All drawings & images are for illustrative purposes only. Facade illustrated may not be facade included in advertised House & Land package. Eagle Homes reserves the right to revise the plans and specifications without notice or obligation. E&OE. Please note that the above price excludes fences. August 2011

**Phone for more information : 9822 5468**

[www.eaglehomes.com.au](http://www.eaglehomes.com.au)