

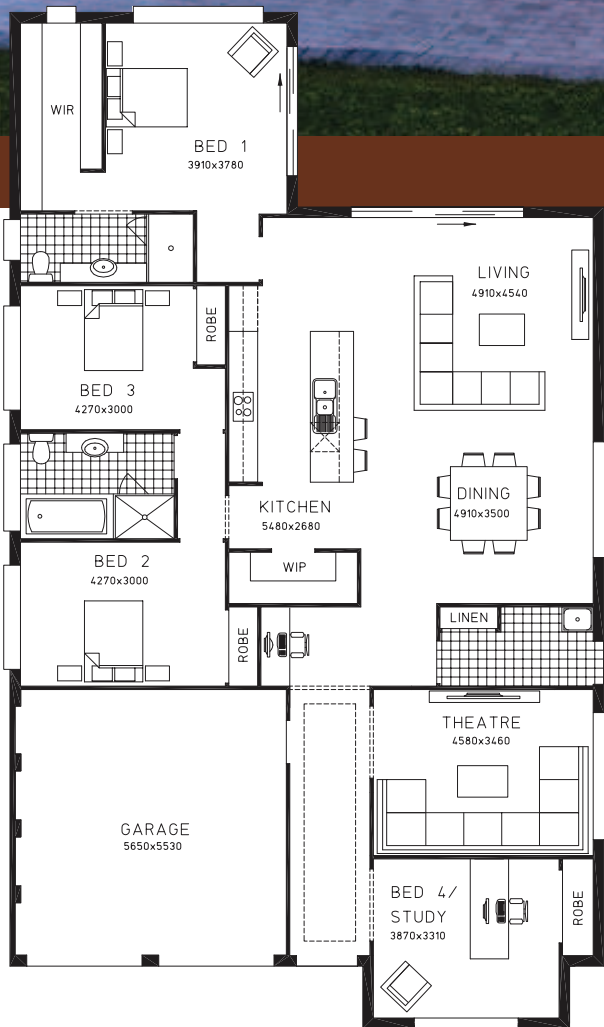
Lot 230, Road No.9 Claremont Meadows

**\$489,700\***



**The Sonata**  
Ivy Facade

House **225.43sqm**



**Package Inclusions**

- Sonata Design with Ivy Facade
- Site costs (based on upto 1mtr fall)
- Council requirements
- Basix requirements
- Stencil concrete driveway with path to front door
- Kikuyu turf & underlay to front yard
- Carpet to bedrooms & hallway
- Tiles to entry, living, kitchen, dining/family
- Designer range inclusions
- Structural & after care maintenance
- Council application fees
- Masterton Mansion Package - Refer to brochure for more details

*\*conditions apply*

**Contact Graeme Smith**

**9821 9782**

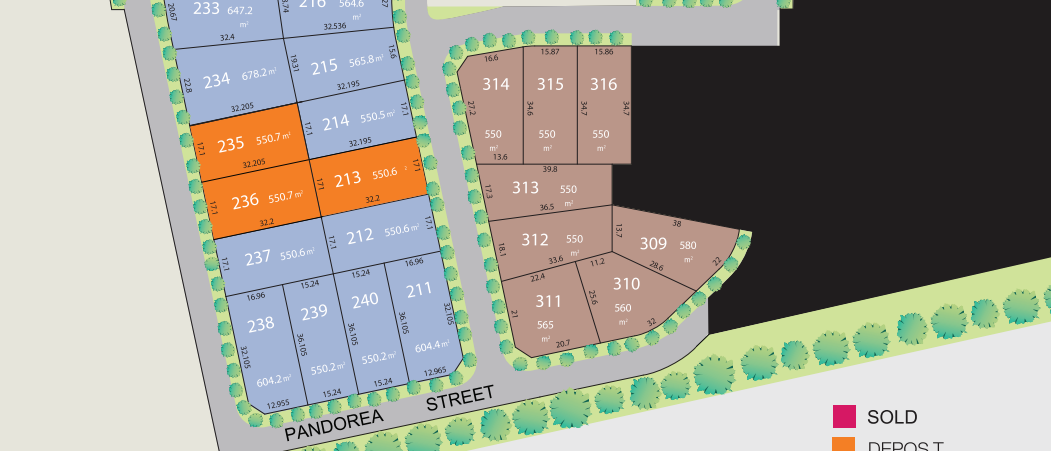
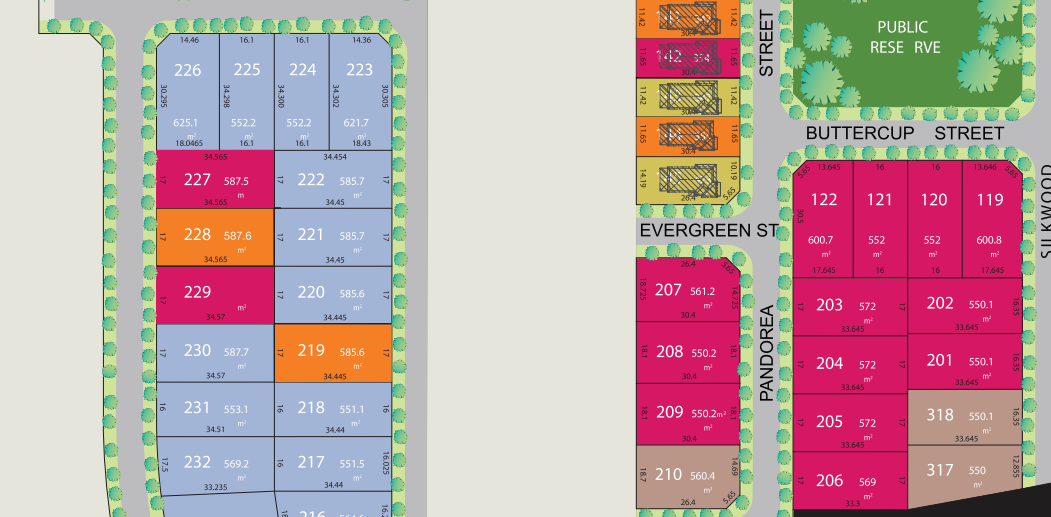
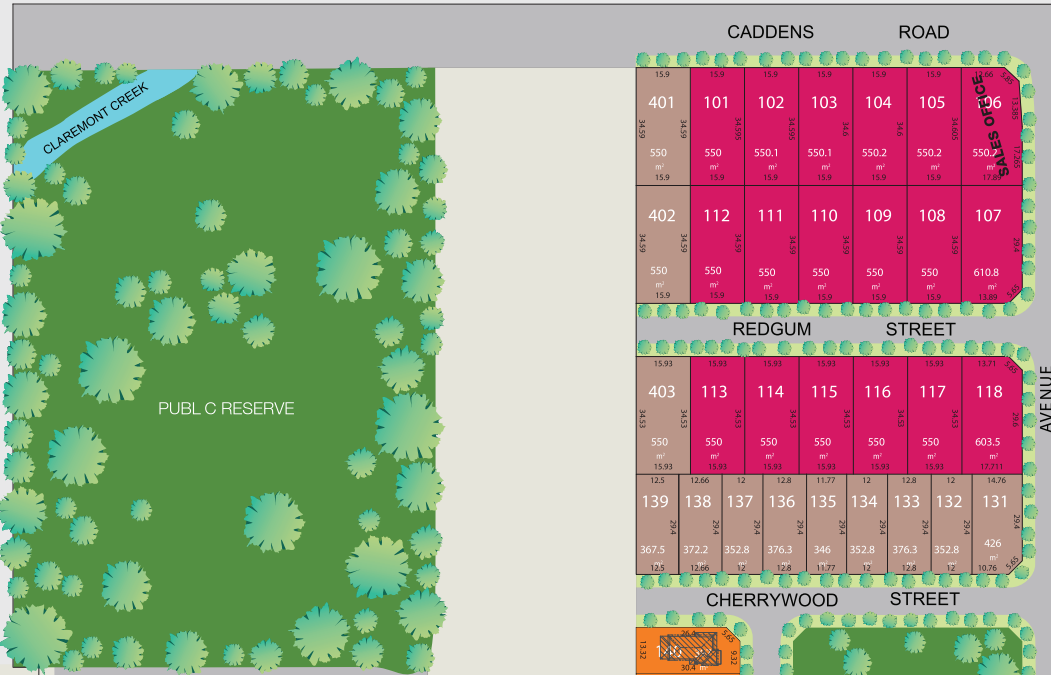
**0402 329 449**

**Area**  
House 225.43sqm  
Living 192.25sqm  
Garage 33.18sqm

Overall Width 12.37m  
Overall Depth 21.16m

Lot 230, Road No.9 Claremont Meadows

**\$489,700\***



- SOLD
- DEPOSIT
- COMPLETED HOME PACKAGES
- FUTURE RELEASE
- STAGE THREE RELEASE NOW AVAILABLE

\*Package prices are based on standard home and builder's preferred siting. Fixed price home & land packages are subject to developer's design review panel & council statutory authority approvals. All prices are GST inclusive. Masterton Homes reserves the right to change prices without notice. Images are for illustrative purposes only. Subject to Final Contour Levels and Statutory Authorities. Effective March 2011. Facade is for illustrative purposes only. Some changes may be required to suit by Developers Building Guidelines.