



Home & Land Package

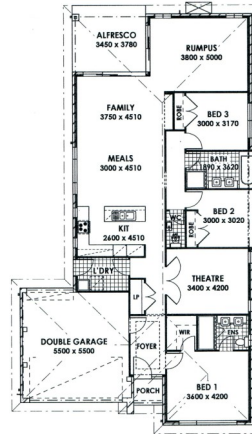


**Turn Key
OFFER**

Iris 23 Traditional Facade

**Call 4648 1475
for more
information**

\$489,045



LILY HOMES

The Iris 23 has space for everyone with 3 good sized bedrooms and ensuite of course.

With well proportioned open plan living areas, theatre room, rumpus and alfresco, the Iris 23 is a well balanced family home and has a rarely seen drive through garage.

PRICE INCLUDES:

**585m2 Block / House / Site Costs
Basix & Lily Quality Inclusions**

Plus: Carpet to bedrooms and home theatre.
Ceramic tiling to porch, entry, hall, kitchen, meals, rumpus & alfresco.

Vertical blinds. Flyscreens to opening windows.
Stencilcrete driveway (up to 54m2). Clothes line.
Turfing. Letterbox. BAL 12.5 Fire Rating.

Upgrade to ducted air conditioning, polyurethane kitchen doors and stone bench top: **TOTAL \$506,945**

Subject to survey, site assessment, estate requirements, council requirements, design guidelines etc.

*comfort,
design,
affordability*

**Need something different?
We build your plans, our plans or we'll design together. For more information simply ask or call Ken on 02 4648 1745 or 0401 468 246**

