



The Austin by Adenbrook Homes

HOUSE DETAILS

Design: Standard Design
Size: 244m² 26.3 squares
Facade: Barcomb

INCLUSIONS

Alfresco Floor
 Integral Concrete Slab

Driveway & Path
 Concrete Driveway

Flooring
 Carpets
 Ceramic tiles

Highlights
 Siteworks: allowance
 Adenbrook inclusions
 Class "M" Slab
 Under-roof alfresco
 Spacious layout
 Guarant build time
 3 coat paint system
 Open plan living

LAND DETAILS

Lot 1422 Popplewell Avenue
Suburb: Colebee
Size: 600m²

Internal Finish

Auto garage door
 European appliances
 Built-in wardrobes
 China basins

Kitchen Benchtop
 Stone top (20mm)

Outdoor
 Turf to front and back

Portico Floor
 Integral slab/tiles

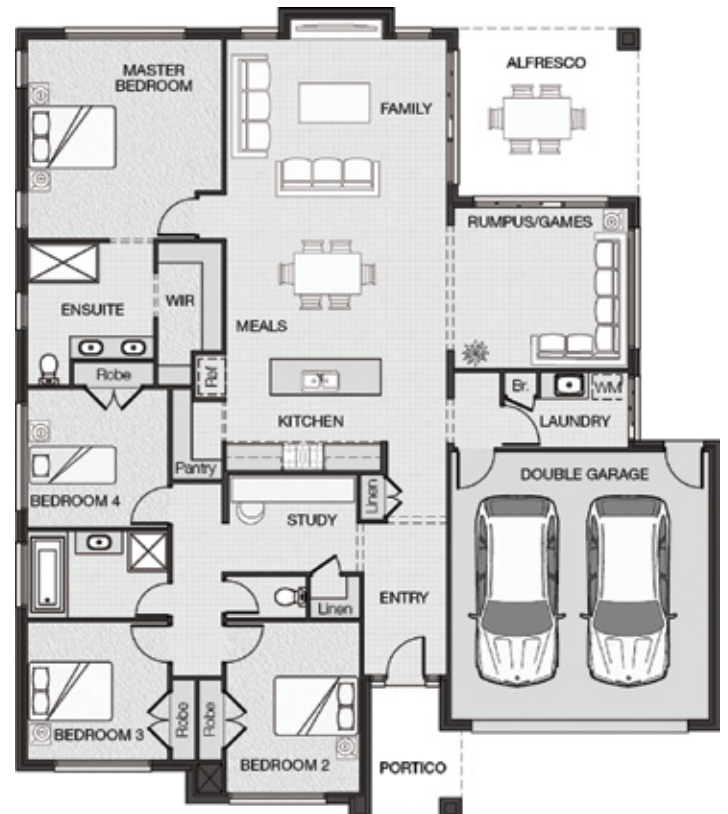
Shower Screens
 Semi Frameless Screen

Window Screens
 FLYSCREENS

Contact: Mathew Wilson 0414 515 902

FROM \$594,900 inc. Land

2 4 2 adenbrookhomes



This work is exclusively owned by Avalon Property Group Pty Ltd and cannot be reproduced or copied, either wholly or in part, in any form without the permission of Avalon Property Group Pty Ltd. For more information on this package including full details on the inclusions, the home and the estate, visit www.adenbrook.com.au. Price is subject to soil test, contour survey and estate design covenants and is inclusive of GST. Adenbrook Homes reserves the right to change pricing without notice. Conditions apply. Adenbrook Homes Pty Ltd QBSA: N/A ABN: 79 082 561 859.