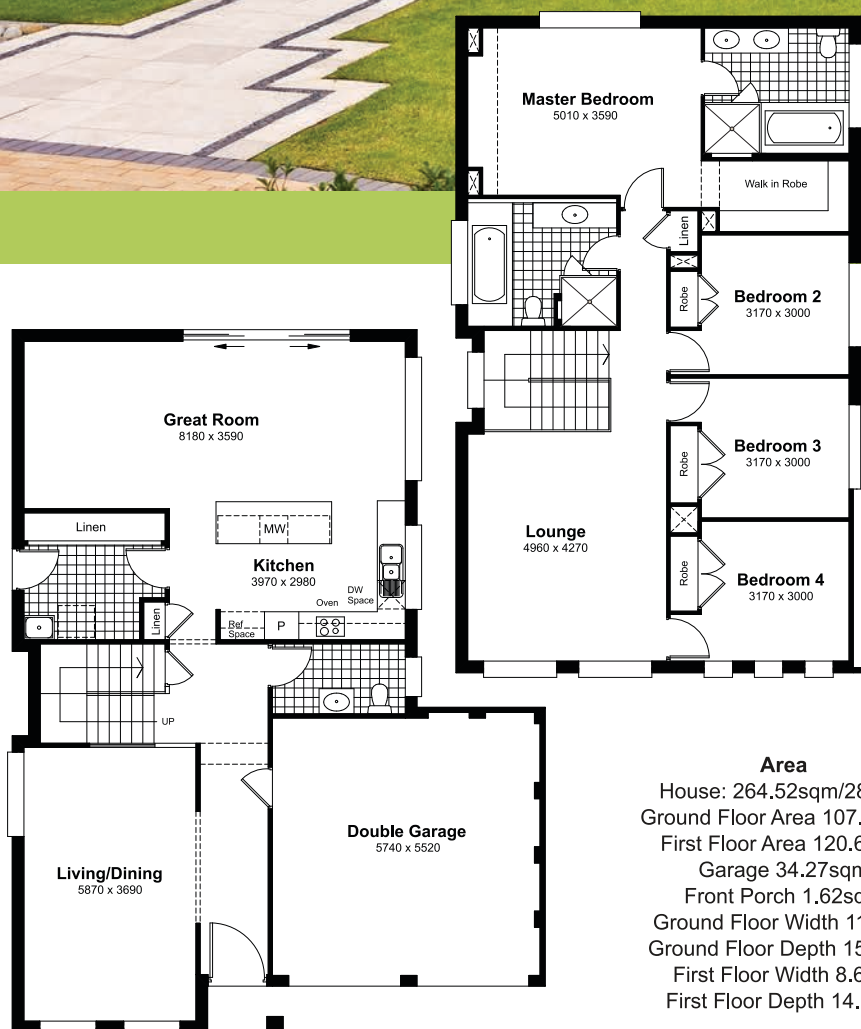




The Villina Savoy Facade



Area
 House: 264.52sqm/28.5sq
 Ground Floor Area 107.95sqm
 First Floor Area 120.68sqm
 Garage 34.27sqm
 Front Porch 1.62sqm
 Ground Floor Width 11.43m
 Ground Floor Depth 15.08m,
 First Floor Width 8.68m
 First Floor Depth 14.08m

Package Inclusions

- Villina 28 Design & Savoy Facade
- Site costs (based on upto 1mtr fall)
- Council requirements
- Basix requirements
- Stencil concrete driveway with path to front door
- Kikuyu turf & underlay to front yard
- Carpet to bedrooms & upstairs lounge
- Tiles to entry, hallway, kitchen and great room
- Designer range inclusions
- Structural & after care maintenance
- Council application fees
- Masterton Mansion Package
(*conditions apply)

Contact Alene Dugdale
0405 128 810

*Package prices are based on standard home and builder's preferred siting. Fixed price home & land packages are subject to developer's design review panel & council statutory authority approvals. All prices are GST inclusive. Masterton Homes reserves the right to change prices without notice. Images are for illustrative purposes only. Subject to Final Contour Levels and Statutory Authorities. Effective March 2011. Facade is for illustrative purposes only. Some changes may be required to suit by Developers Building Guidelines.